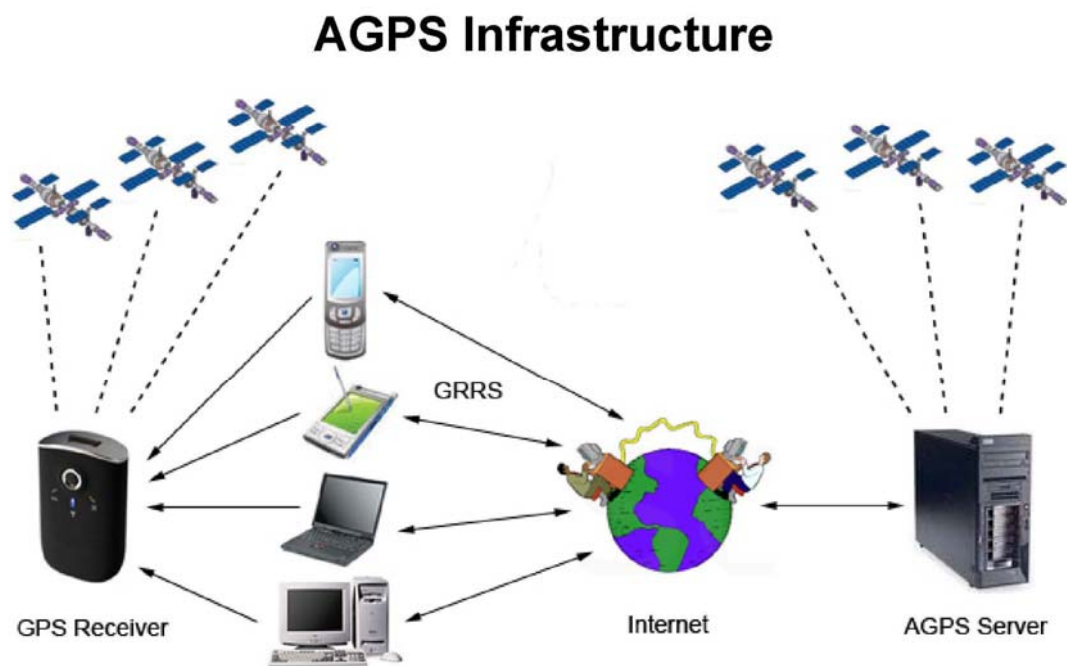


AGPS User's Manual (PC)

VENUS 6 series AGPS AGPS Infrastructure

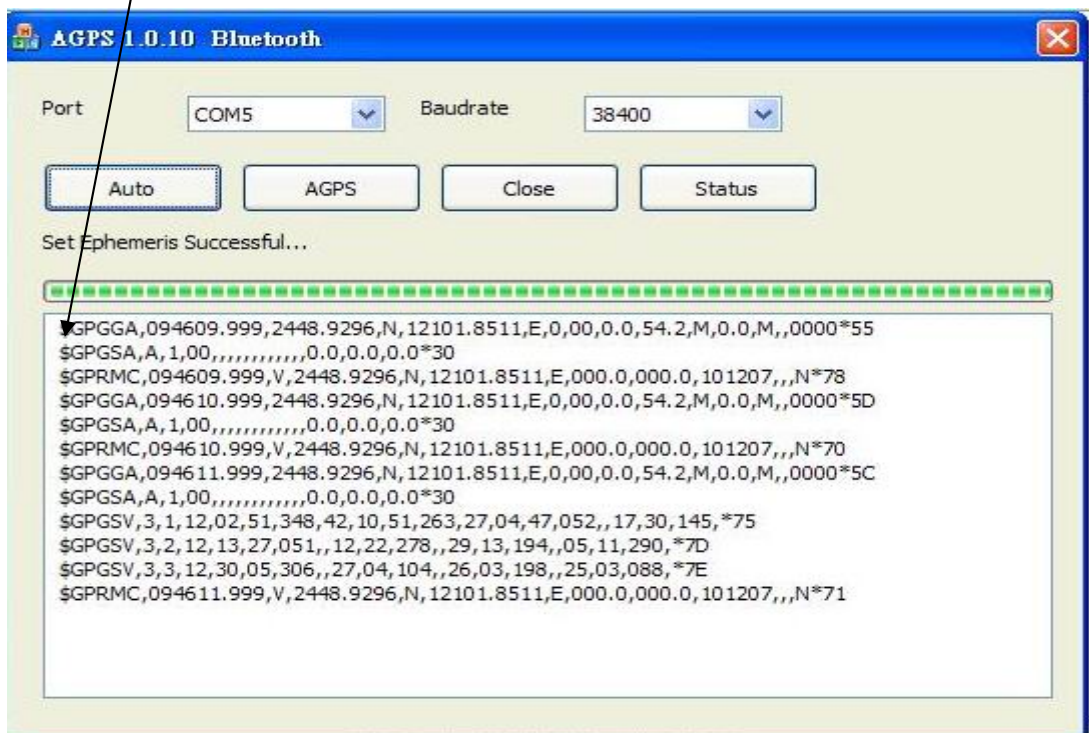
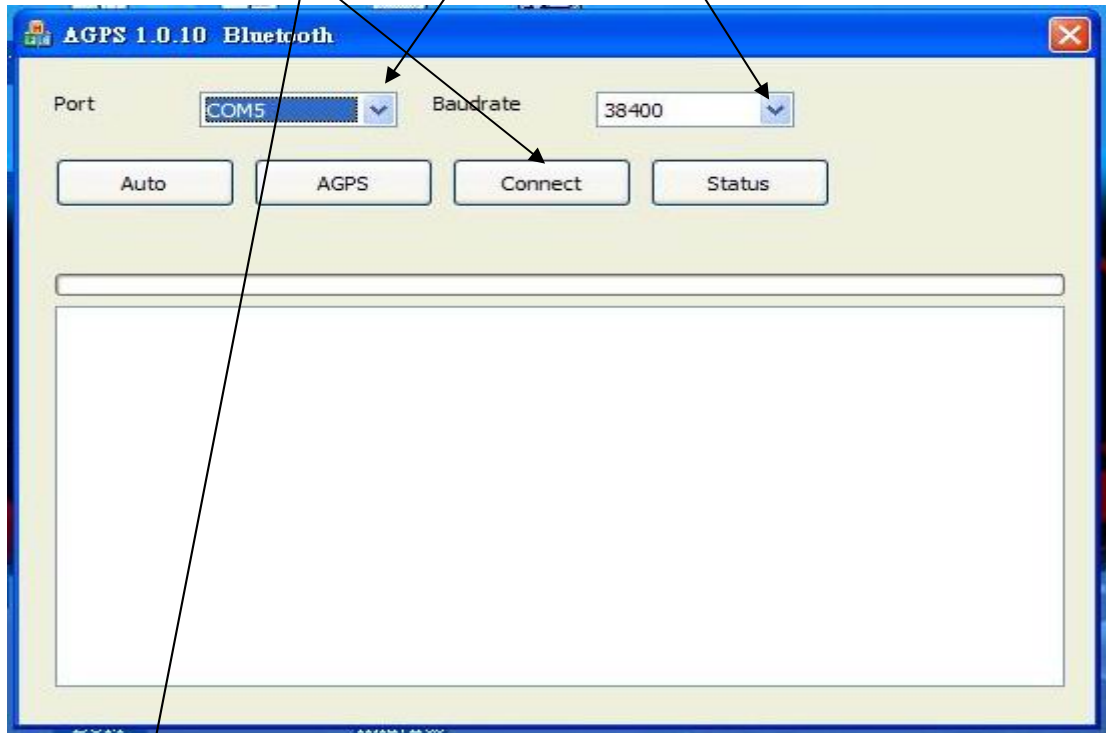


Preliminary, Proprietary and Confidential

Method A:

STEP 1: Connect your GPS device

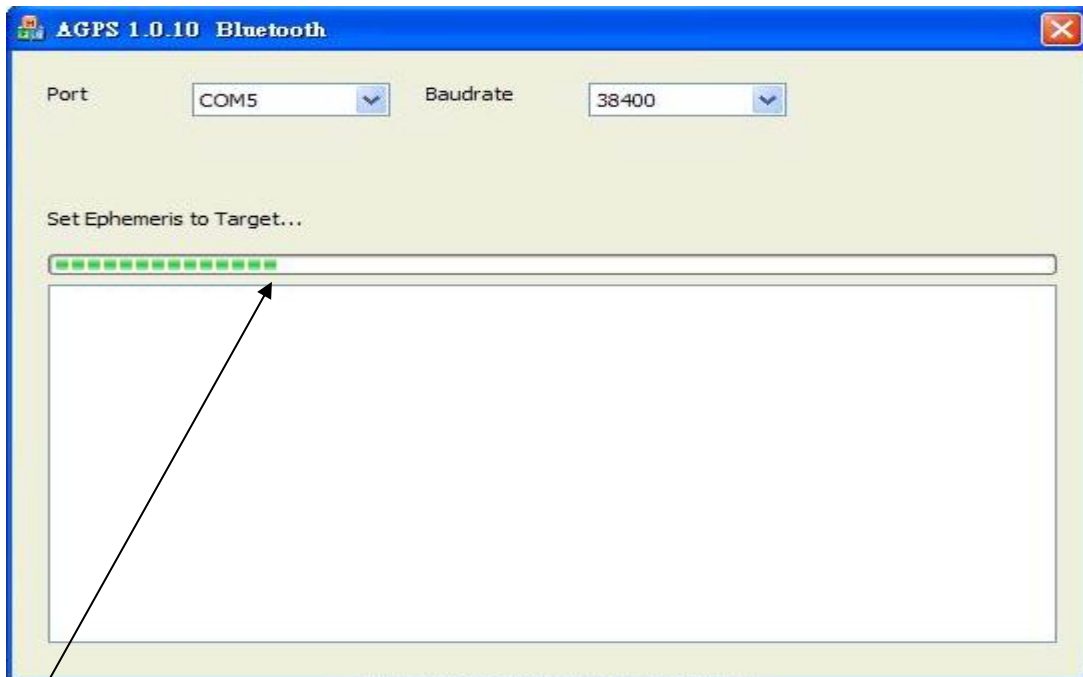
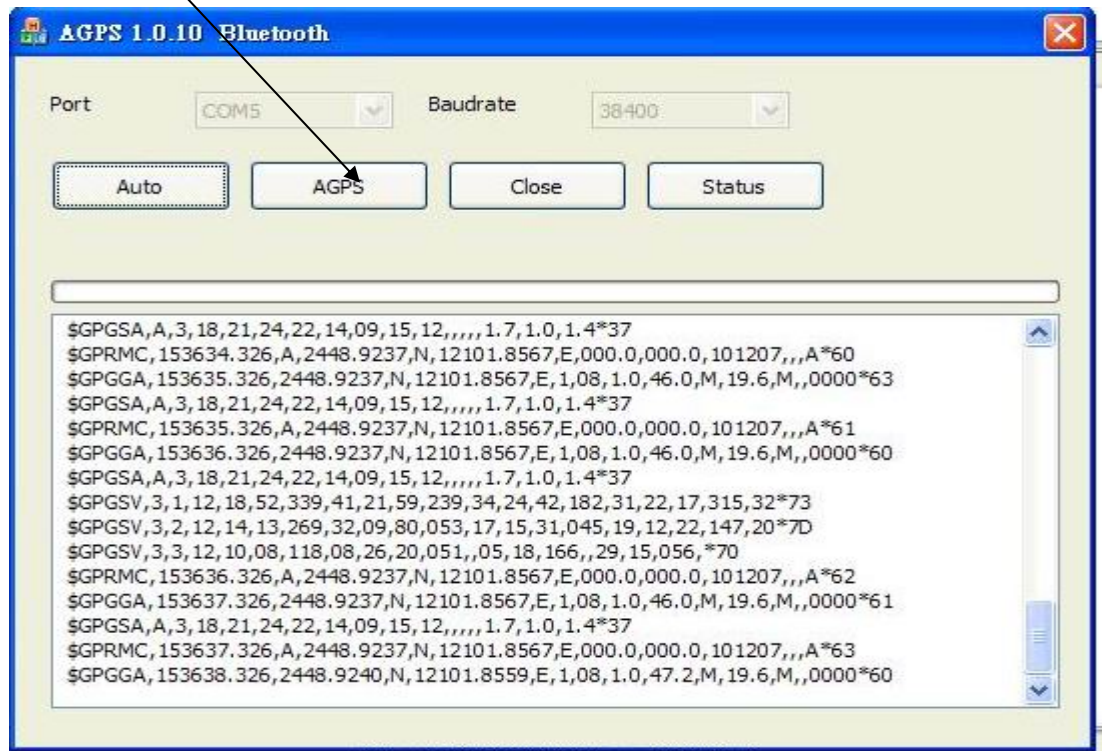
Connect your GPS device to PC, Choose Com Port and Baudrate
Click Connect See the NMEA Message



PS: Make sure your internet was connected

STEP 2: AGPS data download

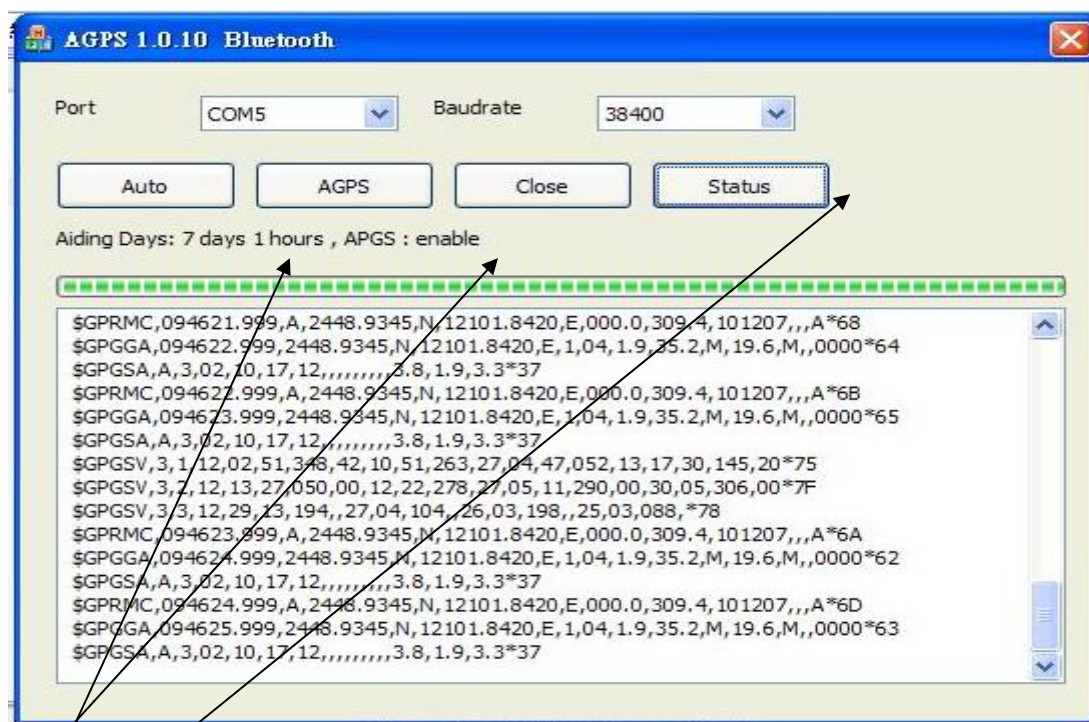
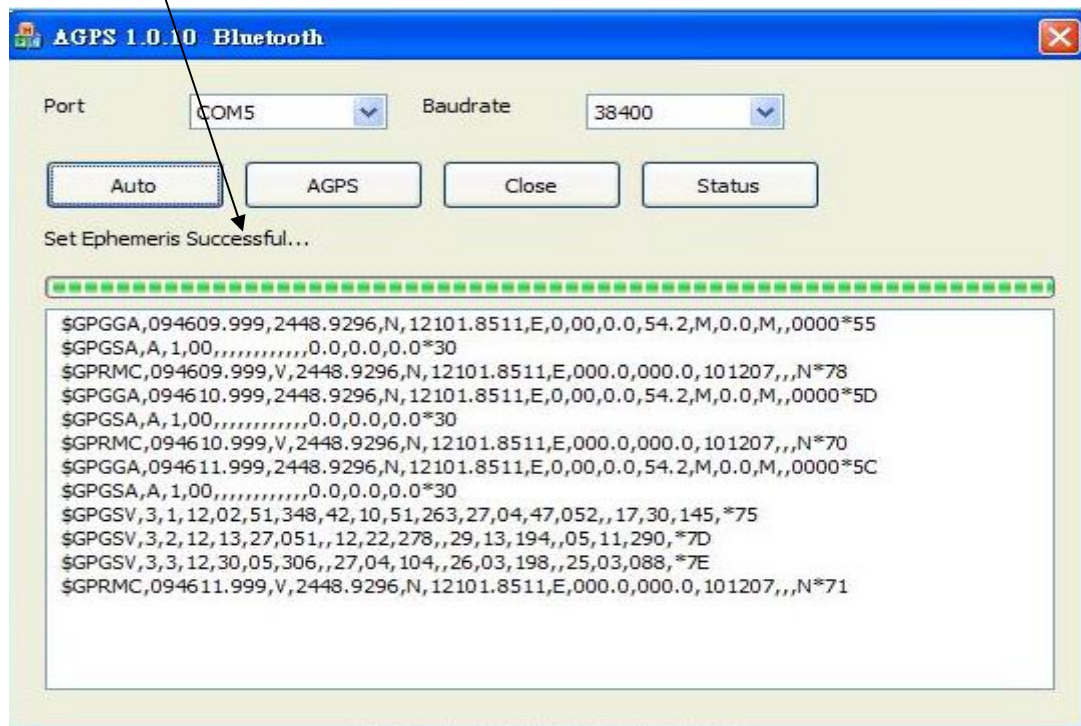
Choose AGPS Download



Automatic connect to internet and download to Flash memory

STEP 3: AGPS Download finish

Set Ephemeris Successful



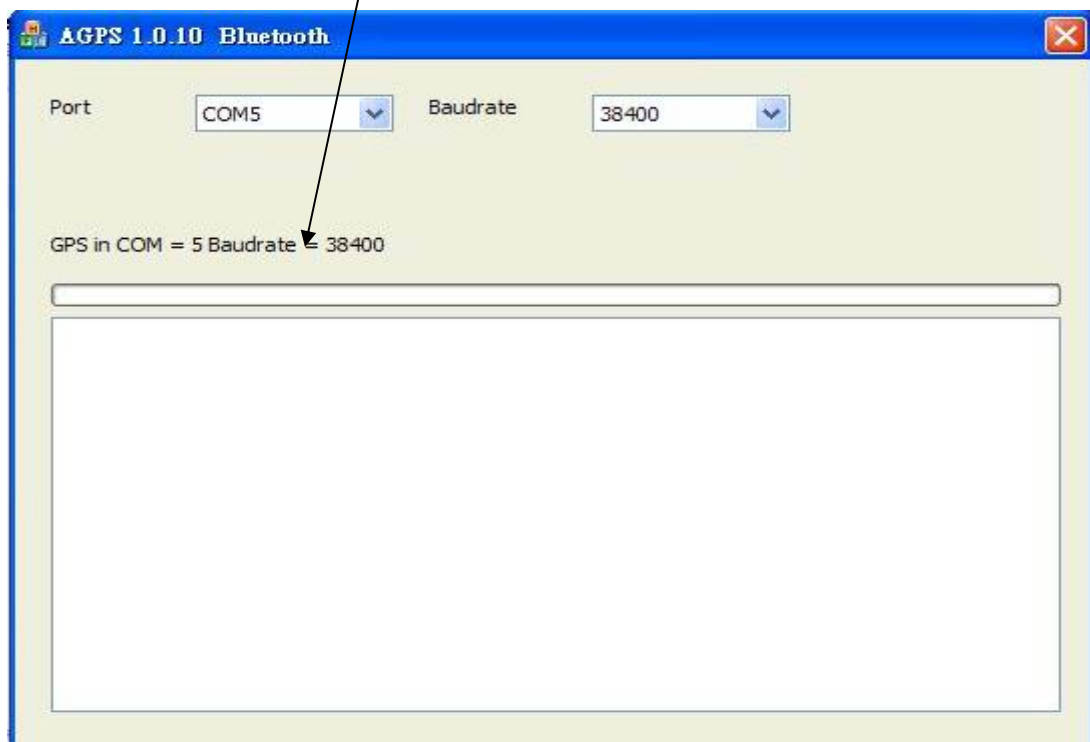
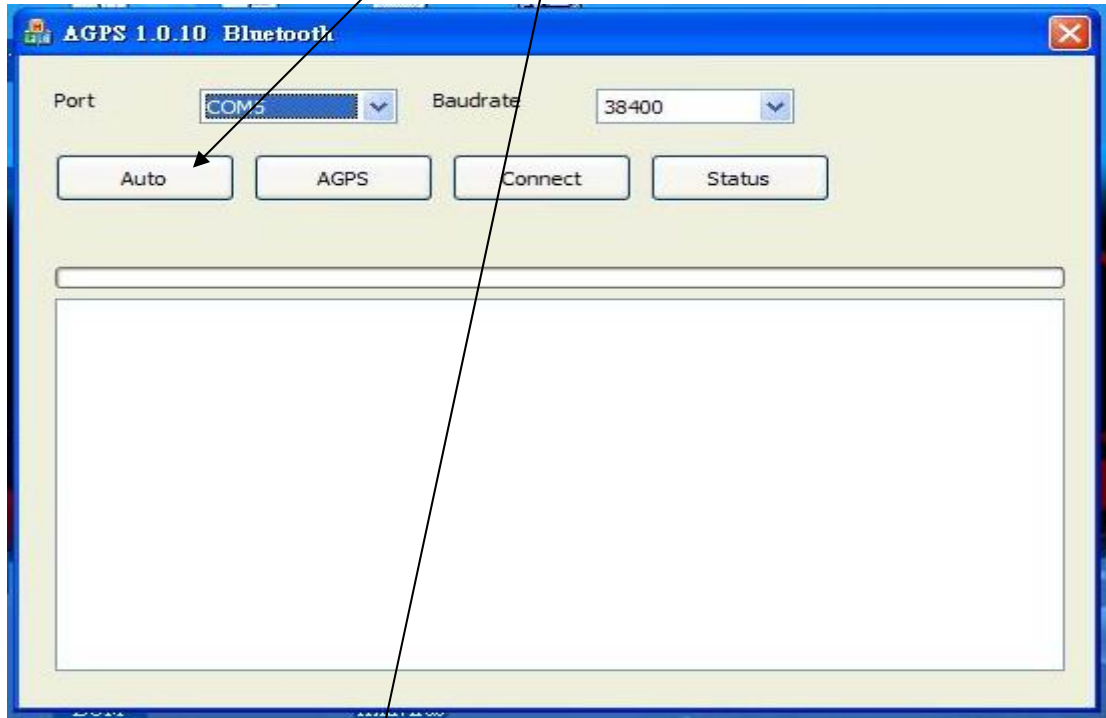
Option : AGPS Enable or Disable

Option : AGPS Status(7 days 1 hours)

Method B:

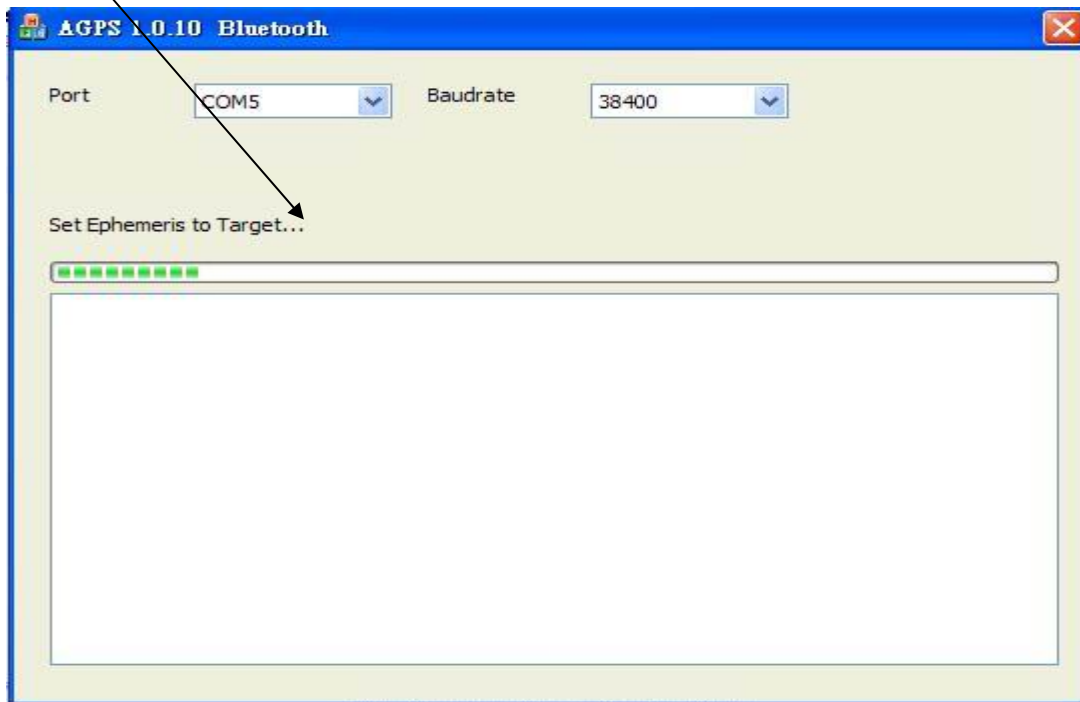
STEP 1: Connect your GPS device

Connect your GPS device to PC, Click Auto to scan Com Port

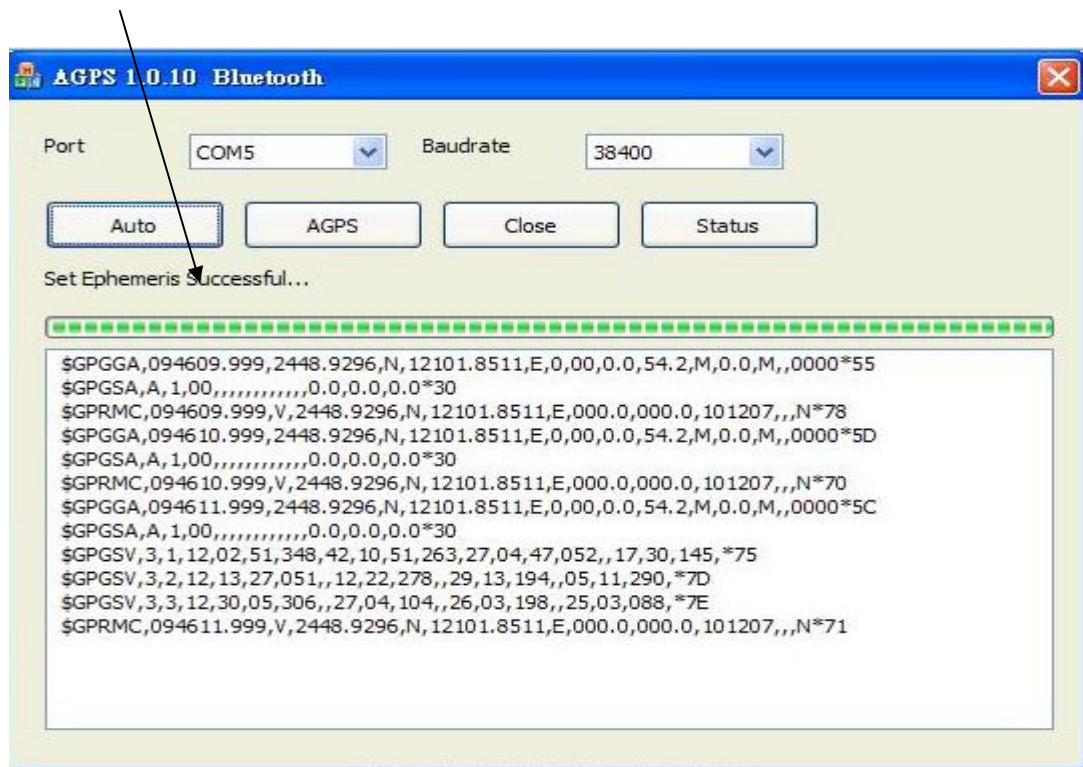


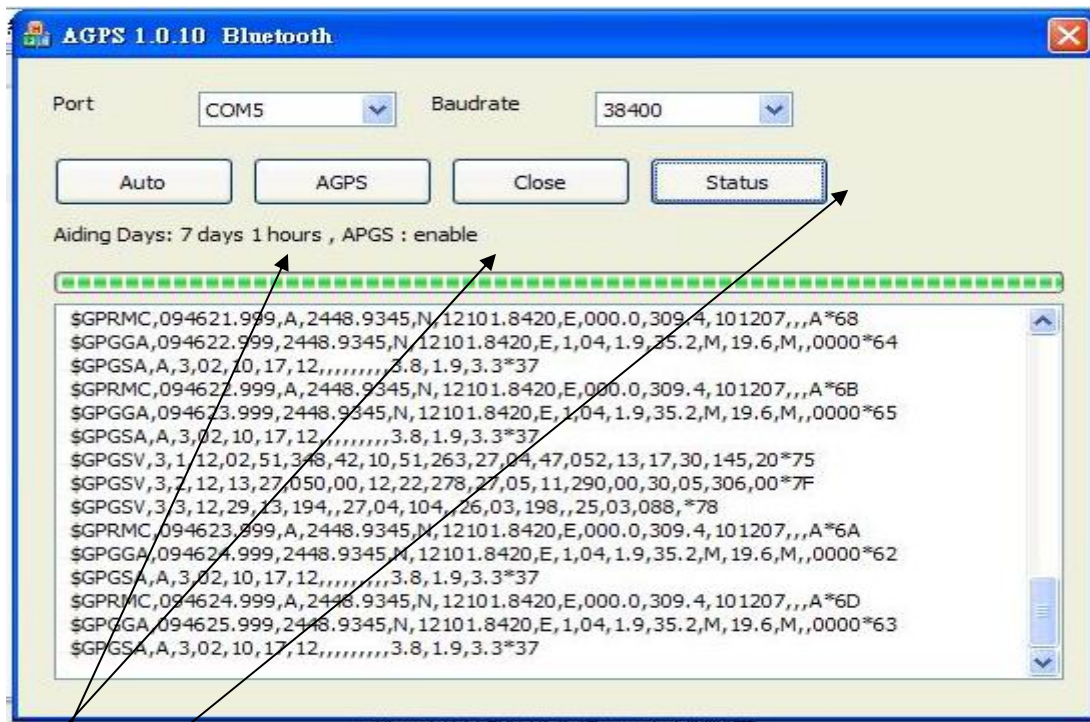
PS: Make sure your internet was connected

Automatic connect to internet and download to Flash memory



Set Ephemeris Successful





Option : AGPS Enable or Disable

Option : AGPS Status(7 days 1 hours)

STEP 1: Connect your GPS device

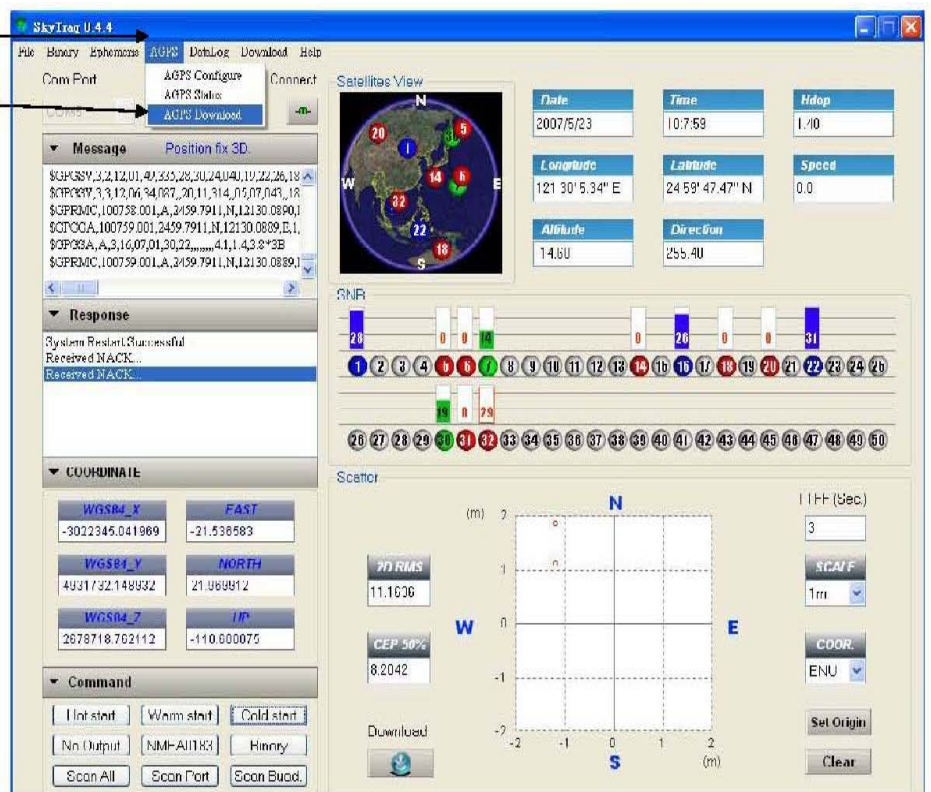
Connect your GPS device to PC Choose Com Port and Baudrate

[See the NMEA Message](#)

Click AGPS menu
Choose AGPS Download

Click AGPS menu

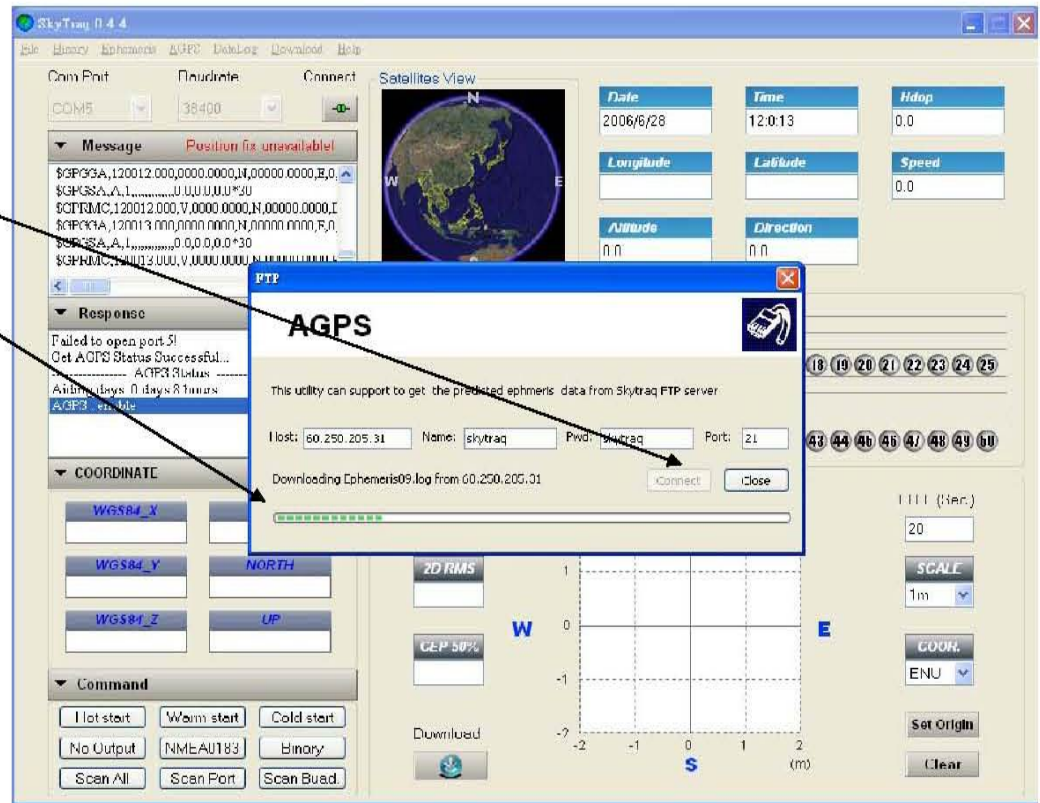
Choose AGPS Download



STEP 3: Automatic download

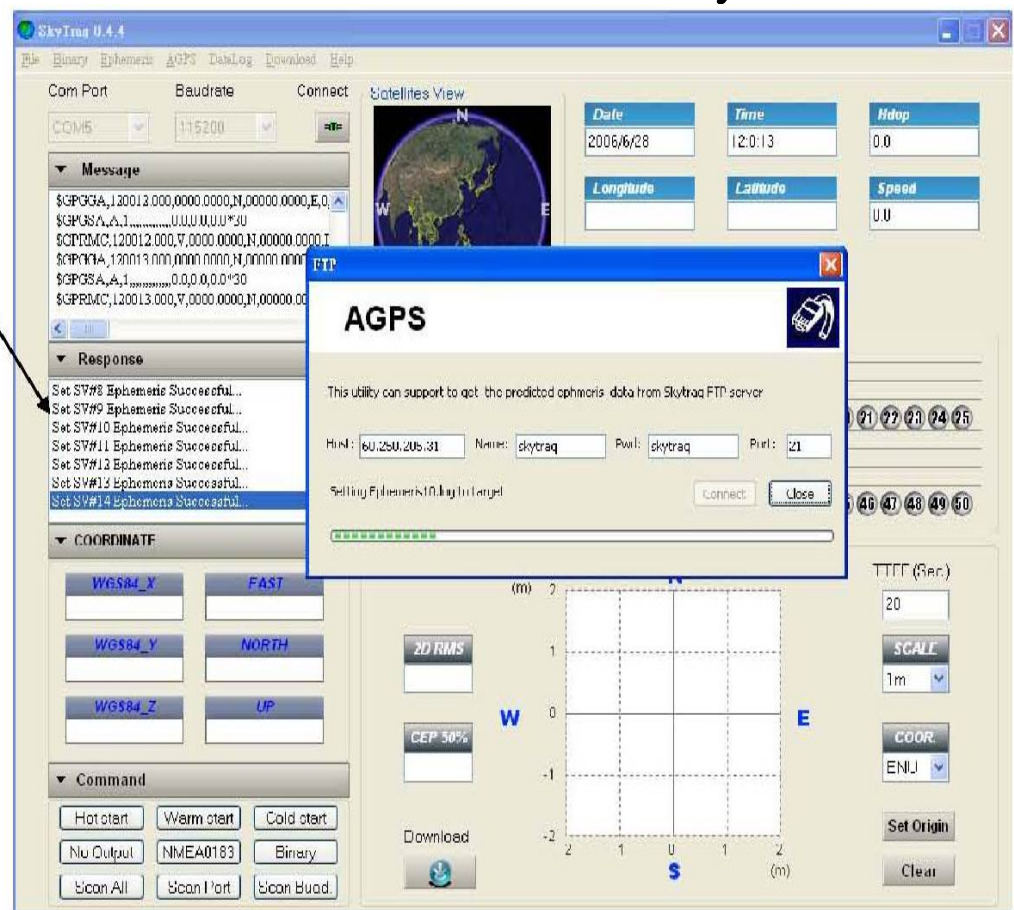
Click Connect

Automatic connect to internet and download



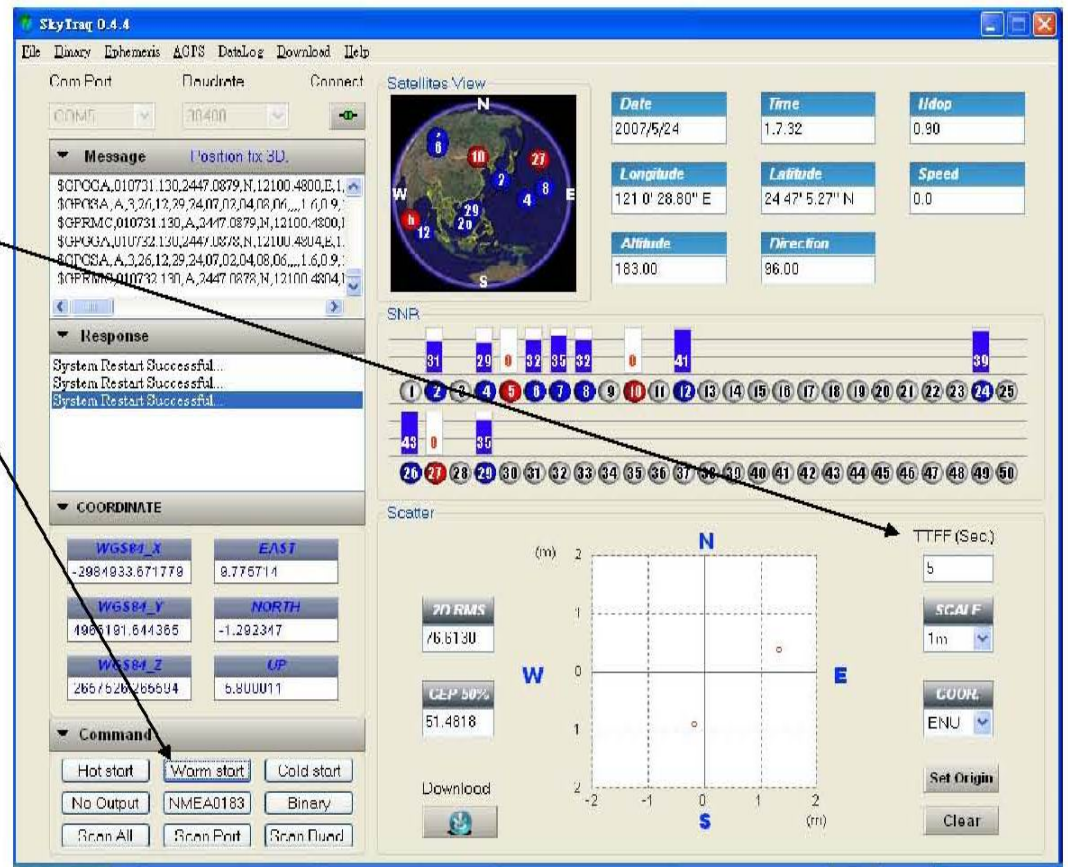
STEP 4: AGPS data download to GPS flash memory

Automatic download data to Flash memory

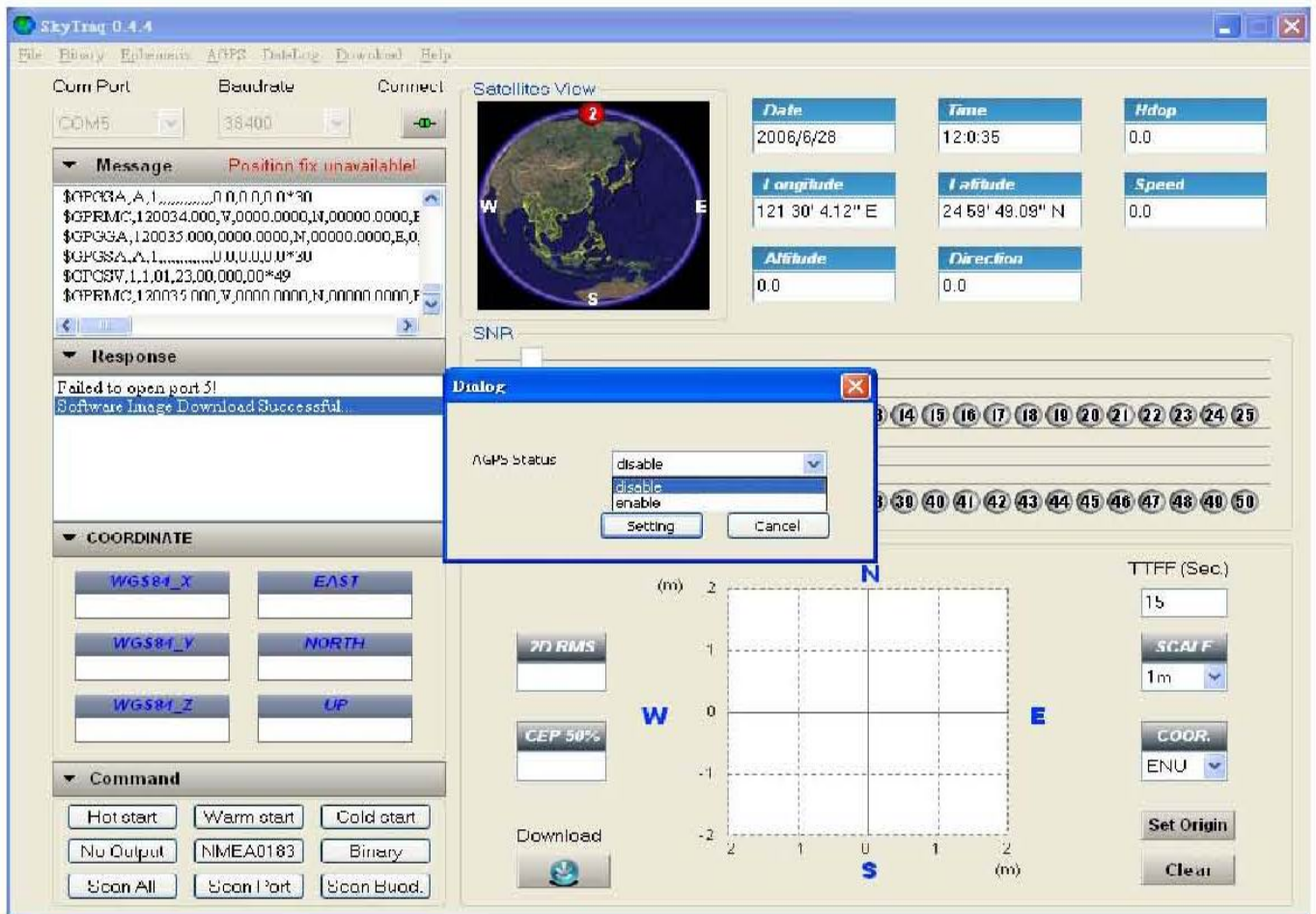


STEP 5: AGPS Download finish

Click Warm Start you will see it fix very quickly



Option : AGPS Enable or Disable



Option : AGPS Status

6 days ,8 hours

SkyTrag 0.4.4

File Binary Ephemeris AGPS DataLog Download Help

Com Port: COM5 Baudrate: 9600 Connect

Message: Position fix unavailable!

Response:

```
Set SV#2 Ephemeris Successful...
Set SV#30 Ephemeris Successful...
Set SV#31 Ephemeris Successful...
Get AGPS Status Successful...
Aiding days: 6 days 8 hours
AGPS: enable
```


COORDINATE

WGS84_X	EAST
WGS84_Y	NORTH
WGS84_Z	UP

Command

Int start	Warm start	Cold start
No Output	NMEA0183	Binary
Scan All	Scan Port	Scan Buad.

Satellites View



Date: 2006/6/28 Time: 12:0:13 Hdop: 0.0

Longitude: Latitude: Speed: 0.0

Altitude: 0.0 Direction: 0.0

SNR

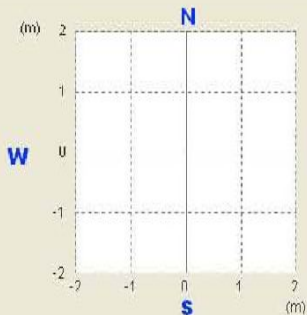
1	2	3	4	5	6	7	8	9	10	11	12	13	14	15	16	17	18	19	20	21	22	23	24	25
26	27	28	29	30	31	32	33	34	35	36	37	38	39	40	41	42	43	44	45	46	47	48	49	50

Scaler

70 RMS

CEP 50%

Download



TTFF (Sec): 32

SCALE: 1m

COORD: ENU

Set Origin

Clear